



# ONE SOURCE

VALVES + FITTINGS + INDUSTRIAL



**PRODUCT GUIDE**

COMMON SENSE  
PROCESS SOLUTIONS

## ABOUT ONE SOURCE – VALVES, FITTINGS AND INDUSTRIAL

This booklet illustrates the types of products and services OSVFI has to offer.

It is set out in short form to provide an overview for product selection. Detailed product information is available on request or by visiting our website: [www.osvalve.com.au](http://www.osvalve.com.au)

It is our commitment to you to offer a common sense solution to suit your process and budget.



## CONTACT US

<b>John Brown</b>	Managing Director – Technical	0434 589 656
<b>Paula Axford-Wood</b>	Business Manager	0422 206 858
<b>Leon Stevens</b>	National Business Development	0424 840 057

### Queensland

1-2/27 Ada Street  
Coopers Plains QLD 4108

**Phone** 07 3274 5858

**Email** [osvalve@osvalve.com.au](mailto:osvalve@osvalve.com.au)

**ACN** 11 137 546 304

**Trent Vidler** 0432 146 931  
Queensland State Manager

**Jeremy Wulf** 0478 715 808  
Operations

**Laurie Smits** 0419 741 650  
Internal Sales and Warehouse Supervisor

### Victoria

7/39 Barrie Road  
Tullamarine VIC 3043

**Phone** 03 9330 4545

**Email** [info@tullavalves.com.au](mailto:info@tullavalves.com.au)

**ACN** 11 137 546 304

**Jack Trail** 0434 182 846  
Operations

**Mitchell Szabo** 0413 344 669  
Technical Sales Representative

### Western Australia

**Gareth Hill** 0401 848 123  
Valve Specialist

## NAMES YOU CAN TRUST

<b>Pennant</b> – Steam Traps, Liquid Drainers, Air Vents	2
<b>Jordan</b> – Pressure Reducing and Temperature Control	4
<b>Watson McDaniel</b> – Steam and Fluid Specialty Products	6
<b>Taylor</b> – Safety Relief Valves	8
<b>Tosaca</b> – Safety Relief Valves, Bursting Discs, Breather and Safety Valves	9
<b>OSVFI</b> – Bronze Valves	10
<b>Gauges and Controllers</b>	11
<b>Intervalve</b> – Butterfly Valves	12
<b>OSVFI</b> – Gate, Globe and Check Valves	13
<b>Marwin</b> – Fire Safe and Industrial Ball Valves	14
<b>OSVFI</b> – Ball Valves	15
<b>Max-Air</b> – Pneumatic Actuation	16
<b>OSVFI</b> – Electric Actuators	17
<b>Therm-Omega-Tech</b> – Temperature Controls	18
<b>Hex</b> – Instrument Valves and Manifolds	20
<b>Steriflow</b> – Hygienic Valves, Regulators and Controls	21
<b>Pneumatic Valves, Fittings and Specialty Items</b> – Metal Work	22
<b>OSVFI</b> – Hose, Fittings and Flanges	24
<b>OSVFI</b> – Specialty Products	25
<b>Mueller</b> – Strainers and Specialty Products	26
<b>Rydlyme</b> – Biodegradable Descaler	28
<b>Ebara</b> – Boiler Feed and Industrial Pumps	29
<b>OSVFI</b> – Fabrication, Installation, Maintenance, Repair and Overhaul	31
<b>OSVFI</b> – Energy Services	32



## PENNANT

Pennant is an ISO Certified Company manufacturing steam traps since 1987. The range includes high quality steam traps and steam system accessories such as boiler feed check valves, sight glasses and strainers.



**Inverted Bucket Steam Traps** for horizontal or vertical installations. Bodies are either in cast iron or cast steel. Complete with built-in strainer and optional blow down valve.

Sizes: ½" to 2". Connections in BSP, NPT, ANSI, SW. Flow rates: to 11,000 kg hour.



**Thermodynamic Steam Traps** for horizontal or vertical installations. Bodies are in stainless steel or forged steel with hardened seats. Has built-in strainer and optional blow down valve. Full vacuum tested before dispatch. These units are also available on our universal connector block.

Sizes: ½" to 1". Connections in BSP, NPT, ANSI, SW.



**Float and Thermostatic Steam Traps** for horizontal or vertical installations. Bodies are in cast iron steel or stainless steel. Has built-in thermostatic air vent or can be supplied with Steam Lock Release (SLR) or both.

Sizes: ½" to 2". Connections in BSP, NPT, ANSI, SW. Flow rates: to 60,000 kg hour.



**Balanced Pressure Thermostatic Steam Traps** for horizontal or vertical installations. Bodies are in cast stainless steel and has undergone an intense seat hardening process to ensure long service life.

Sizes: ½" to ¾". Connections in BSP and NPT.



**High Capacity Float and Thermostatic**

Sizes: 1", 1½" and 2". Flanged PN16 and BSPT.

## PENNANT

Exporting worldwide, Pennant employs excellent manufacturing practices and procedures. This includes 100% testing for all traps before dispatch.



**Float Type Liquid Drainer** for horizontal or vertical installations. Bodies are either in cast iron or cast steel. Usually supplied with balance pipe to prevent air locking.

Sizes: ½" to 2". Connections in BSP, NPT, ANSI, SW. Flow rates: to 4500 kg hour.



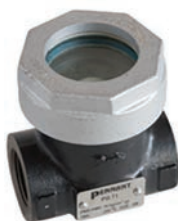
**Air Vent Float Type** for vertical installations. Constructed entirely of stainless steel for long life, these units will vent air under pressure.

Sizes: ½" and ¾". Connections in BSP, NPT, SW.



**Balanced Pressure Air Vent** for venting air from steam systems. These units will reliably vent air close to steam temperature.

Sizes: ½". Connections in BSP, NPT, ANSI, SW.



**Sight/Check Valve for Steam Traps** for horizontal installations. Bodies are in cast iron with PTFE ball check. Various options are available such as stainless steel body, raised domes, rotors etc.

Sizes: ½" to 2". Connections in BSP or NPT.



**Sight/Check Valve for Steam Traps**

Bronze body.

Sizes: ½", ¾" and 1". Connections in BSPT.

## JORDAN

Jordan Valve is a leading manufacturer of pressure regulators, back pressure regulators, temperature regulators, pneumatic and electric control valves, sanitary valves and accessories.



### **MK 60 Direct Acting Pressure Reducing Valve**

The Mark 60 Sliding Gate Pressure Regulator is used to regulate the downstream pressure to a predetermined set point. The spring in the Mark 60 holds the sliding gate seats in their normally open position to allow the process media to pass through the seats. As pressure increases downstream the valve modulates to control at set point.



### **MK 50 Direct Acting Back Pressure/Relief Valve**

The Mark 50 Sliding Gate Back Pressure Regulator is used to regulate upstream pressure at a predetermined set point. The spring in the Mark 50 holds the sliding gate seats in their normally closed position. As pressure approaches set point the valve will modulate open. Ideal for boiler feed bypass valves.



### **MK 80 Temperature Control Valve Self Acting**

A temperature regulator is only as good as its actuator and a great deal of research has gone into the development of Jordan's stainless steel SWA actuator. That is why the SWA, combined with Jordan's sliding gate regulator design, provides the finest temperature control available in a self-operated design.  $\pm 1^{\circ}\text{C}$ !



### **MK 70 Sliding Gate Control Valves**

The Mark 70 Series is a line of pneumatically-operated diaphragm control valves that combine multiple spring actuators with the precision of Jordan Valve's advanced sliding gate seat for closer control and greater accuracy. A complete range of positioners and I/P converters are available as integrated packages.



### **MK 66 Sliding Gate On/Off Valves**

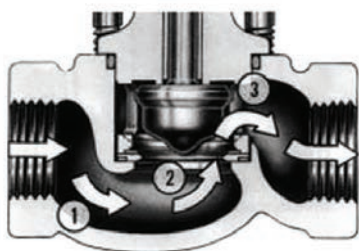
The Mark 66 Series are often used as pneumatically operated on/off valves. These are especially effective when used on chilled water systems for humidification purposes. They are available in ductile iron, bronze and stainless steel body, with either screwed or flanged ends.

## Jordan's Sliding Gate Valve Seats: Simple Concept, Superior Performance

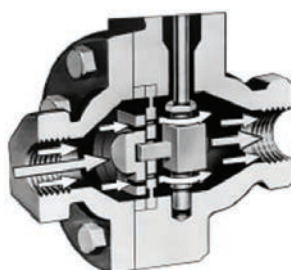
You will notice something different in a Jordan valve – the unique sliding gate seat. A remarkably simple concept that offers sophisticated performance and benefits not found in traditional rising stem valves.



*Sliding gate seats are made up of a disc and plate, both slotted with openings that align to allow the required flow to pass through the orifices.*



*In conventional rising stem globe style valves, the flow changes directions three times as it follows an "S" path. This leads to greater velocity, turbulence, noise and more wear on the seating components.*



*The straight-through flow path of a sliding gate valve reduces velocity and turbulence and leads to quiet operation and reduced wear.*

The sliding gate seat is made up of two primary parts: a movable slotted *Disc* and a stationary slotted *Plate*. Together, these two parts achieve levels of performance, reliability, and accuracy that are hard to find in other valve designs.

### Straight Through Flow

The disc is moved across the surface of the plate by the disc pin. When throttled open, the slots of the disc and plate align to allow the required flow through the seats.

Since the flow path is straight through the slots, turbulence, noise, and wear are reduced. Another feature of this unique design is that the disc is supported from behind by the plate. This enables the seats to operate efficiently in the near closed position without being disturbed by the high, unbalanced forces a single seated globe valve would experience.

This unique ability provides much higher rangeability than can be achieved with a globe style valve while maintaining tight shut-off. When the valve is closed, the disc and plate form a solid barrier to flow. The upstream pressure and a retaining guide combine to keep the disc and plate in constant contact, which eliminates the noisy chattering often encountered during valve operation.

This construction also minimizes the hunting commonly found in conventional rising stem globe style valves.

### Short Stroke = Fast Response

The stroke of the sliding gate valve is just one-third that of a globe style valve. This translates into fast response, reduced droop, longer diaphragm life, and greater sensitivity. The disc requires very little travel to move from fully open to fully closed, and quickly corrects pressure or temperature deviations.

The end result is faster response and more accurate control than provided with conventional seat designs.



## WATSON MCDANIEL

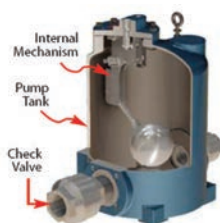
Watson McDaniel Company, your one-stop source of industrial steam and fluid specialty products. High quality, value and reliability have been the hallmarks of Watson McDaniel since 1878.



### Pilot Operated Regulators

Watson McDaniel pilot operated regulators give excellent value for money, with ductile iron body, 'connector block' pilot connections, a built-in full size line strainer with integral blow down and phosphor bronze diaphragms.

These are features not found in the more expensive valves. All 100% manufactured in the USA.



### Condensate Pumps

For applications where system pressure is not high enough to lift condensate to the return line, often used on heat exchangers with modulating control valves.

Watson McDaniel offer a comprehensive range of steam or inert gas powered pumps and trap/pump combinations for nearly every application.



### Temperature Control Valves

Direct acting (self operating) temperature control valves can be used for heating or cooling, mixing or diverting.

This is a comprehensive range with 'special' build valves available on very short lead times. Bodies are available in stainless steel, bronze or ductile iron to suit many industrial applications.



### Inverted Bucket Steam Traps

Watson McDaniel make inverted bucket traps to rival those of the industry leaders at a fraction of the cost.

Many of the spares are interchangeable with Armstrong inverted bucket traps from 880 through 883 models.

These inverted bucket traps will give many years of trouble free service, and save significant energy over that time.



## HEAT MISER – BY WATSON MCDANIEL

The Heat Miser is an instantaneous steam to water heater which produces hot water from steam. Fully assembled units eliminate the need for large hot water storage tanks and saves significant energy which is required for large standing tanks of hot water.

### Old Hot Water System Negatives

- Takes up excessive floor space
- Stagnating hot water
- Danger of legionella growth
- Corrosion of tanks
- Significant radiant heat loss

### New Heat Miser System

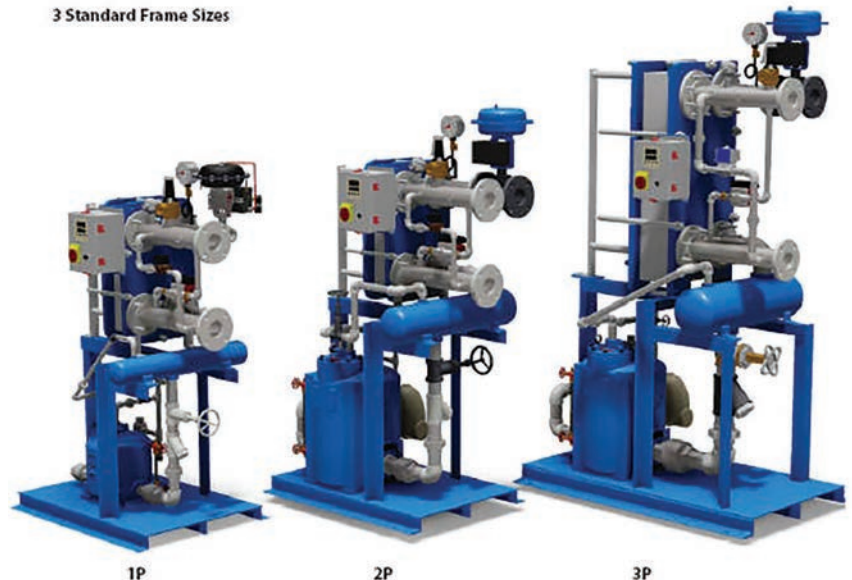
- Small footprint
- Stainless steel waterside components
- Simple maintenance and reduced cost
- Efficient plate and frame heat exchanger

Have you had a price from an industry leading supplier that took your breath away?

Call us for a quote, you may be pleasantly surprised.

All these systems are made 100% in USA, the quality is first class.

3 Standard Frame Sizes



### Control Valves

Control Valves using either pneumatic or electropneumatic signals for positioning. These valves are very good value. Available in two-way and three-way configurations for control of steam, water or other process fluids.

They can be used for pressure, temperature or flow control, mixing or diverting.

## TAYLOR – SAFETY RELIEF VALVES

Taylor Valve has more than 100 US patents on high quality safety relief valves. Every Taylor product is designed to meet the highly demanding requirements to effectively control their liquid, steam or gas operations.



### High Capacity Valves – Series 211S

The Model 211 has full stainless steel trim for steam applications. All valves have standard 17-7 stainless steel spring. They provide excellent re-seating characteristics with pivoting ball-post design. All sizes have heavy duty easing gear.

Options include O-ring seats, oxygen cleaning, anti-vibration and/or packed easing gear.



### Liquid Relief – Bypass – Series 8200

Industry standard valve for liquid relief, liquid by-pass and over protection. Series 51 and 55 are generally used where size or spacing is a factor and higher pressure settings are required.

Options include hand wheels for easy set point changing or stainless steel trim parts.



### Steam – Air – Liquid – Series 88/89

Can be used for steam on non-fired vessels or as a safety relief device after pressure reducing sets to protect equipment.

Available with or without levers. Available in sizes ½" to 3".



### High Quality – Performance OEM Safety Valves

These small yet high quality and high performance valves are suited to compressors, receivers, gas lines, steam lines, steam cleaners, autoclaves and sterilisers.

Many options are available including chrome plating, polishing and oxygen cleaning.



### MK50 Relief Modulating Valve

The Mark 50 Sliding Gate Back Pressure Regulator is used to regulate upstream pressure at a predetermined set point. The spring in the Mark 50 holds the sliding gate seats in their normally closed position. As pressure approaches set point the valve will modulate open. Ideal for boiler feed bypass valves.

## TOSACA

Tosaca specialises in the design and manufacture of safety relief valves, bursting discs, breather and safety valves. In accordance with EN, API, ASME and other standards.



### Model 1415 – Safety and Relief API RP 520

- Connections: flanged ASME/ANSI B16.5
- Design/size: API STD 526, ASME Section VIII
- Rating: 150#/300# 600#/900#/1500# RF
- Materials: A216 WCB/A351 CF3M
- Inspection: EN-4126-1/7 API STD 527
- Tolerances: EN-4126-1 and ASME UG-126



### Model 1216 – Safety and Relief Valve

- Connections: NPT/BSP/flanged ASME/ANSI B16.5
- Design/size: API STD 526, ASME Section VIII
- Rating: 150#/300# RF (PN40) 4000 kPa
- Materials: 316L Inspection EN-4126-1/7
- Temperature range: -28 to 350°C



### Model 1416 – Safety and Relief Valve

- Connections: NPT/BSP/flanged ASME/ANSI B16.5
- Design/size: API STD 526, ASME Section VIII
- Rating: (PN100) 10,000 kPa
- Materials: 316L or carbon steel
- Inspection: EN-4126-1/7/MSS-SP-55
- Temperature range: -28 to 350°C



### Model 1100 – Vacuum Relief Valve

- Connections: NPT/BSP/flanged ASME/ANSI B16.5
- Design/size: API STD 526, ASME Section VIII
- Rating: 150#
- Materials: 316L or carbon steel or aluminum
- Inspection: EN-4126-1/7
- Temperature range: -10 to 260°C



## OSVFI – BRONZE VALVES

One Source Valves are experts in choosing bronze valves for industrial applications. From steam and condensate to marine situations we have the perfect valve for your applications. Oxygen cleaning is available on request.



### UV-1

Bronze union bonnet globe valve with 410 stainless steel trim. Robust construction makes this a reliable choice for steam, condensate and other applications where a metal seat is desirable. Options include pinned union nut and screw down non return (SDNR). Size range from 15mm to 80mm.



### UV-34

Bronze union bonnet horizontal piston check valve. 410 stainless steel trim with pintle guides at the bottom and pin guided at the top make this valve ultra reliable in service. Size range from 15mm to 80mm.



### UV-141

Bronze parallel slide blowdown valve. These items use NKL metal seats and discs to ensure very long service life. These will outlast ball type blow down valves many times over. Rated for steam pressures up to 1700 kPa. Also available in a steel body version for higher pressures.



### UV-Series

Multitudes of bronze valves from swing checks to sight glasses to relief valves. Ball valves with stainless steel trim and stainless steel levers for marine use.



### UV-149

Bronze controllable lift check for boiler-feed applications. Available in BSP from 15mm to 50mm and flanged from 40mm to 100mm. Cast steel bolted bonnet arrangements are also available.

## GAUGES AND CONTROLLERS

Ex stock delivery is important with this type of equipment and we try hard to cover all the day to day requirements for industry. We also have access to specialty manufacturers who can provide quick delivery for special items.



### Pressure Gauges

From gauges costing just a few dollars right through to NATA traceable test gauges.

We can supply from 40mm diameter to 300mm diameter. Lower, rear entry, mounting flanges for panels or surfaces.

4" and 6" boiler gauges are our specialty.

Most gauges can be liquid filled to suit applications where vibration is present.



### Bimetallic Thermometers

These gauges can be supplied in many variations. Dry, liquid filled, rear entry, lower entry or every angle. 80mm and 125mm dials are standards but special units can be built to suit your application.

Ranges from -50 to 450°C.

Thermowells are available in screwed or flanged.



### Syphons

Protect your pressure gauges and transmitters using our range of syphon tubes. From pigtail to U-type in both carbon steel (Schedule 40) to stainless steel.



### Controllers, RTDs, Thermocouples and Cables

Typically used for controlling temperature in your process we can also configure these to work as pressure controllers. Either with on/off or relay control they can also have 4–20mA inputs and outputs. Simple to use and able to provide relatively low cost solutions.

## INTERVALVE – BUTTERFLY VALVES

Intervalve manufacture a comprehensive range of butterfly valves for virtually any application. From rubber seat to PTFE and metal seat, short delivery times can be expected even for exotic items.



### High Performance – Double Eccentric

These valves are suitable for steam applications with soft seat up to 1000 kPa and higher pressures and temperatures with a metal seat. Also available in a certified fire safe version. Pneumatic and electric actuation is easily achieved. Duplex materials and trims can be supplied on very short lead times.



### Rubber Seat – Wafer or Lugged

General industry valves can be supplied for water, oils and gas with an AGA approval. Locking lever, gearboxes, pneumatic and electric actuators are all readily available. Quality construction at an affordable price.



### PTFE – Split Body Design

These valves are suitable for chemical applications and can be actuated to become part of fully automated systems. They are fully repairable and can also be offered with polyurethane liners and coated discs for abrasive processes.



### High Temperature – Damper and Control

Valves built specifically for high temperature gas applications. Suitable for round or rectangular ducting or pipe. Various actuation options are available to suit your system, from simple levers to pneumatic and electric modulating motors.



## OSVFI – GATE, GLOBE AND CHECK VALVES

OSVFI are suppliers of heavy industrial manual valves for process applications. You can rely on expert advice and product selection. Cast and forged materials in steel, stainless steels and alloys to suit.



### Gate Valves

Gate valves for water, oil, condensate etc. Materials in A216-WCB or A105 with trims to suit. Actuation from chain wheels to gearboxes to electric or even pneumatic sizes from 15mm to 600mm are readily available from stock in Australia. Also available in 316 stainless steel and some limited stock in Cr/Mo steels.



### Globe Valves

Globe valves for steam, water, oil, condensate etc. Materials in A216-WCB or A105 with trims to suit your applications. Actuation from chain wheels to gearboxes to electric. Sizes from 15mm to 200mm are readily available from stock in Australia. Also available in 316 stainless steel and some limited stock in Cr/Mo steels.



### Check Valves

Check valves in piston, swing, wafer configurations for water, oil, condensate etc. Materials in A216-WCB or A105 with trims to suit your applications. Sizes from 15mm to 600mm are readily available from stock in Australia. Also available in 316 stainless steel and some limited stock in Cr/Mo steels.



### Y Pattern Globes/Globe Check/SDNR

Globe or Globe-Check valves for steam, feed water, oil, condensate etc. Materials in A216-WCB or A105 with trims to suit your applications. Also available in 316 stainless steel and some limited stock in Cr/Mo steels.





## MARWIN – FIRE SAFE AND INDUSTRIAL BALL VALVES

Marwin Valve is a leading manufacturer of high quality ball valves. With creative engineering and manufacturing practices Marwin Valve can offer a valve for almost every industrial application.



### Model V2HT, V3HT and V2FHT

A range of valves that is built by a quality manufacturer that is specifically prepared for steam applications. With superior gland arrangements and filled TFE seats they work on steam for extended periods.

- V2HT economical two-piece screwed body. BSPT
- V3HT three-piece body. BSPT
- V2FHT flanged ANSI 150



### Fire Safe Ball Valves

High quality investment cast CF8M – 316 stainless steel body with full API 607 – 4th Edition Fire Safe Certification.

AF51F 150# and AF53F 300 # Versions.

Available in full bore with ISO mounting pad for actuation. This valve is kept in stock for immediate supply.



### Steam Ball Valve 3000 Series

High temperature seats with 50% stainless steel fill give rigidity at elevated temperatures. Live loaded gland will cope with temperature fluctuations for extended periods.

Quality investment cast CF8M – 316 stainless steel body with full bore. Available with mounting pad for simple actuation. This is the best combination available for steam service, pressures up to 40 bar steam can be achieved.



### Model OSV36C and OSV51C

Screwed, socket weld, butt weld and flanged valves for cryogenic applications.

All valves come with test certification to BS6364:1984 with 1998 amendment.

Available on short delivery times.

## OSVFI – BALL VALVES

Added to the range of high performance valves we also stock a tremendous range of commodity style ball valves for day to day uses.

We have a ball valve for your application at a sensible price.



### OSV-10

The Model OSV-10 is a 316 stainless steel investment cast ball valve made in the economical three-piece configuration. Available in sizes from 8mm to 50mm with either BSPT or NPT ends. Can also be supplied in male x female as a special order.



### OSV-20 and OSV-25

The Model OSV-20 is a high pressure two-piece valve. The Model OSV-25 has an ISO mounting pad for ease of actuation. Both models have high pressure construction being 2000 PSI for sizes up to 50mm. They are available in BSPT, NPT and fire safe configurations.

Sizes up to 100mm are available on request.



### OSV-39HP

The Model OSV-39HP is for high pressure applications up to 6000 PSI with NPT or BSPT connections.

PEEK seats allow the valve to operate up to 250°C. Available in sizes 1/8" to 1".

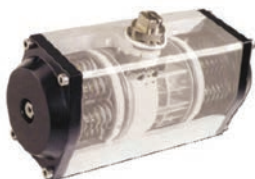


### KF-8900 Series Valves

Sanitary and clean applications are well covered by this range of cavity filled valves with tube ends or tri clover clamp ends. Pure PTFE cavity filled seats are standard as is an ISO mounting pad for easy automation.

## MAX-AIR – PNEUMATIC ACTUATION

Max-Air actuators use the time-proven rack and pinion design and come in fifteen sizes to suit most applications. These units have multiple springs that can be field fitted or replaced. Entire range is ISO 5211 and Namur compliant to ensure interchangeability of valves and components.



### Standard Model

- 15 sizes from 8 to 1450 NM
- -20 to +90°C
- Serial numbered and bench tested
- Anodised extruded aluminum bodies
- Patented preloaded spring cartridges
- Buna seals



### Optional Models

- -40 to 160°C
- Hard anodising, stainless steel bodies
- Epoxy paint systems
- ENP (electroless nickel plating) to body and caps
- PTFE seals
- FKM (Viton) or EPDM O-rings



### Switch packs and accessories

Due to the ISO and Namur compliance of Max-Air actuators, fitting of after market accessories is a breeze. A complete range of solenoid operators can reliably operate the actuators and switch packs and transmitters can confirm a valve position at any time in the process. SAA Exd approvals are available.



### OSVFI LCE – Electric Actuation on a Budget

For simple actuation at low cost you can't beat our range of LCE electric actuators. All have manual override as a standard function and come with a 12 month replacement warranty. Available in 12 sizes to suit ball valves, butterfly valves and other rotary devices.

## OSVFI – ELECTRIC ACTUATORS

Electric Actuators for all applications both rotary and linear, proportional or on/off control options, these actuators are robust, cost effective and very high quality.



## THERM-OMEGA-TECH

Manufacturers of the most reliable tempered water systems and automatic control valves for the management of fluids. Energy and cost savings can be realised by using Therm-Omega-Tech products.



### OEM – Specialty Temperature Actuated Valves

For just about any application. Valves are all 100% factory tested to perform as designed. For over temperature shutdown using air pilots, steam injection into a pipeline, heat tracing instrument enclosures, the uses are endless.



### MD – Mixing/Diverting Valve

This range of valves has many applications for mixing hot and cold stream or diverting over or under temperature fluid back to a heat exchanger. Sizes from ½" to 2" are manufactured in bronze or stainless steel.

Sizes up to 100mm are available on request.



### HAT – Heat Actuated Traps

These compact temperature actuated traps can be used as sub-cooling steam traps, as over temperature valves for pump casings or for protection against the destructive effects of freezing. Any application requiring constant self regulating temperature control within a narrow band.



### SP – Scald Protection Valve

These small yet highly repeatable temperature actuated valves are commonly fitted to safety showers to protect from overheated water due to solar exposure. They will bleed overheated water to drain so that at all times a suitable temperature is maintained at the shower head.

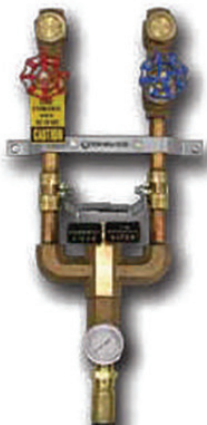
## THERM-OMEGA-TECH

The Therm-Omega-Tech Hose Down Station has been designed to put the safety of your operators first, thanks to its innovative technology.

The system utilizes a thermal element located in the downstream leg of the mixing valve. The thermal element is designed to throttle steam flow should the temperature set point be exceeded and will completely shut down at 8°C above set point or if cold water flow is interrupted.

The thermal element will not re-open until cold water flow is restored.

### SIMPLICITY



Single lever on/off

One moving part

Removable cartridge

Quiet and stable

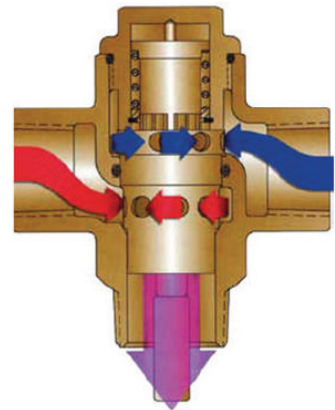
Resists scale build-up

Shuts down steam if water supply fails

Wide range of steam and water operating pressures

Full range of hoses, trigger guns, hangers etc

We can also supply secondary safety shutdown systems to further protect plant and personnel





## HEX

To many upstream, refining, and petrochemical professionals a “Hex Valve” is a generic description for bar stock instrument, gauge, or orifice valves. Hex does it all with their original objective to *“Create value for the customer by simplifying the piping associated with instrumentation and utility fluids.”*



### Hand Valves

A complete range of valves in 3000, 6000 and 10000 psi. Carbon and stainless steel bodies with standard non rotating tips. Also available with NACE trim and in rodable designs for oil and gas applications.



### Monoflange Valves

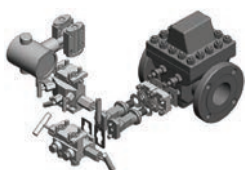
Hex Monoflange: designed and manufactured by the company that produced the oil and gas industries’ first primary gauge and orifice valves.

Hex is proud to manufacture the most rugged and dependable Monoflange design used today. See for yourself, Hex builds tough valves.



### Manifold Valves

Hex Valve is the leader in the gauge, block and bleed instrument industry with its unique bonnet assembly design. Hex offers a time-tested, metal-to-metal body/bonnet seal with the largest stem diameter in the industry. Hex offers a proven chevron design multipoint packing and graphite/graphite/graphite wiper ring arrangement.



### Spring Tite

The SpringTite™ Stabilized Mounting System represents the next generation of close-coupled, DP flow systems. It offers three distinct advantages over traditional stabilized direct mount support platforms.

- Fixed, easy torque loading
- Independent stabilizer height adjustment
- Higher safety load factors



## STERIFLOW

100% USA manufactured, Steriflow Valve is the single source for high performance, high quality, sanitary valves. Steriflow has earned its reputation for quality through nearly two decades of success in pharmaceutical, biotechnology, food, cosmetics and clean process industries.



### MK 978

Sanitary Control Valve is designed to meet the rigid specifications for sterile process and clean utility control valves. It is used widely in bio-pharmaceuticals, cosmetic, dairy, food and beverage industries. Many of these configurations can be supplied on short delivery times.



### MK 96

This pressure regulator is designed to maintain downstream pressure in systems requiring sanitary conditions. It is suitable for CIP systems and is totally self draining. Incorporating the JORLON diaphragm which comes with a lifetime replacement warranty, this valve provides the ultimate in reliability.



### MK 934

Sanitary Steam Trap is used for sterilisation of sanitary vessels using SIP methods. This trap has a low flow and a high flow element to handle both heat up and maintenance cycles in the sterilisation process.



### MK 90

Sanitary Ball Valve is designed with FDA approved cavity filler seats and tri-clamp ends. The inner diameters and end connections are exactly the same size as the ID of the ball/seat ensuring no obstruction of flow will occur.



## PNEUMATIC VALVES AND FITTINGS

One Source Valves is a distributor of many well know pneumatic brands including Metal Work and SMC. We also sell some of the lesser known brands – this gives us the flexibility to supply the best product for your application based on performance, price and delivery time.



### Solenoid Valves

A complete range of solenoid valves for every application. We can supply standalone units with single or double coils, manifolds, high speed valves. The experience we have allows us to tailor the solutions to suit your needs.

We have an extensive range of Namur valves for direct mounting to actuators.



### Cylinders

From basic ISO mount cylinders through to specially built units for your exact application, using pneumatic or hydraulic motives.

Cylinders are available in either aluminium or stainless steel.



### Air Service Units

- Filters ¼" to 2" sizes
- Regulators ¼" to 2" sizes
- Oilers ¼" to 2" sizes
- Drainers ¼" to 2" sizes
- Gauges
- Isolation



### Fittings and Tube

- A comprehensive range of fittings and tube products
- Fittings are available in poly or stainless steel
- Metric sizes from 4mm to 16mm
- Imperial from ⅛" to ½"
- Including silencers, speed controls, quick exhaust

## PNEUMATIC SPECIALTY ITEMS

Completing our pneumatics range we have valve and actuation products and valve positioning products, from simple I/P transducers to smart positions with position feed back capabilities.



### Angle Seat Valves

Valves available in both stainless steel body and bronze body with either metal or plastic actuators, we can deliver a valve from stock that suits your application.



### Positioners – Pneumatic and Electro-Pneumatic

From simple electro-pneumatic positioners through to digital self calibrating units we have a range to suit nearly every valve application.



### Instrument to Pneumatic Transducers

Using this simple device, you can convert a 4–20mA signal into a pneumatic signal for valve actuation.

Typically used on our Jordan range of sliding gate control valves for valve positioning without the need for a complex and expensive valve positioner.



### Mechanical Air Valves

Manual valves for push/pull, roller lever type, foot operated, emergency switching of pneumatic systems, sizes from 1/8" to 1" are commonly available from stock.



## OSVFI – HOSE, FITTINGS AND FLANGES

Today it is difficult to find knowledgeable suppliers who can supply the whole range of products for your typical plant maintenance jobs. One Source Valves can provide that service at a reasonable cost.

A one stop shop for items you need to complete the job on time. No minimum order requirements mean that we are easy to deal with and you receive the same service every time.

### Wash Down Hose – Steam Rated Rubber Hose



A complete range of wash down hoses and specialty hoses for steam. We can supply hoses made up to your specified lengths with the correct fitting for the application.

### Black Steel Fittings



### Stainless Steel Fittings



### Flanges



## OSVFI – SPECIALTY PRODUCTS

One Source Valves recognises that we need to stock the products that industry requires so that we can supply on short notice. We strive to supply quality products at an affordable price.



### **Stainless Steel Regulators**

Simple and easy to use and maintain, these light weight regulators give excellent value for money. Sized from 15mm to 50mm and available from stock for immediate delivery. Available in both pressure reducing and back pressure versions.



### **Low Pressure Stainless Steel Regulators**

Simple and easy to use and maintain, these light weight regulators give excellent value for money. Sized from 15mm to 50mm the large diaphragm area makes these regulators ideal for very low outlet pressures.



### **Pilot Operated Float Valve in Stainless Steel**

These pilot operated float valves use line pressure delivered from a pilot line to close the valve on high level. It is also possible to use other pilot signals.



### **Pump Control/Automatic Control Valves**

Using pilot operators it is possible to control the action of these valves to act as reducing valves, back pressure regulators, solenoid operated valves etc.



### **Sample Coolers**

These Australian made sample coolers are fabricated in stainless steel for safely taking samples of boiler feed water.

They are rated above 2100 kPa for added safety. Special build items are available.

## MUELLER – STRAINERS

Today, Mueller Steam Specialty is the world's largest supplier of strainers and the number one provider of specialty products serving the valve industry. While the company has seen many changes, the dedication to quality, service and delivery remains the same.



### Screwed Series 'Y' Strainers

From heavy bronze through aluminium, ductile iron and steel to stainless steels and alloy steels in pressures from 125# to 4500#, this is indeed the largest range of high quality strainers available anywhere in the world. Fully certified and guaranteed to perform as a strainer should.



### Flanged Series 'Y' Strainers

From heavy bronze through aluminium, ductile iron and steel to stainless steels and alloy steels in pressures from 125# to 4500#, this is indeed the largest range of high quality strainers available anywhere in the world. Fully certified and guaranteed to perform as a strainer should. Butt and socket weld ends are also available.



### 'T' Strainers - Fabricated

Designed to remove foreign particles from pipelines, these strainers provide effective and economical protection of pumps, valves, and similar equipment. These items are available from 50–600 mm. They are particularly cost effective in sizes above 300 mm in 150 and 300# versions and above 100 mm in 600#.



### Mueller Temporary Strainers

Available in standard configurations or fabricated to your drawings, Mueller can produce these items in record time. Stainless steel perforated screens with fine mesh fitted to inside or outside the screen. Special materials such as Monel are also available on short notice.

## MUELLER – STRAINERS AND SPECIALTY PRODUCTS

Mueller are also recognised as a reliable supplier of specialty components for pipelines such as basket strainers, duplex strainers for critical applications, line blinds and suction diffusers (also known as vortex breakers). High quality is expected and delivered every time by Mueller. Full certification is available on every item.



### Series 125 – Simplex Basket Strainers

- 125F – 150# cast steel or stainless steel
- 126F – 300# cast steel or stainless steel
- All feature quick release QR Covers for ease of basket removal and cleaning
- Mesh down to 40 micron
- Cast iron and bronze bodies are also available



### Series 690 – Duplex Strainers

- 691F – 125# cast iron
- 692F – 150# cast steel, bronze or stainless steel

Many more configurations to choose from, single valve changeover ensures flow can not be accidentally interrupted under any circumstances.



### Line Blind Valves

Positive isolation and protection of personnel can be achieved by the use of line blind valves, guaranteeing that while a line is isolated it can not be accidentally put back online. Can be supplied in many configurations to suit your applications and specifications.



### Suction Diffusers – Strainers

- Monel, cast iron, steel, stainless steel, bronze, alloy steels
- From 2" to 20"
- From 125# to 300#

Designed to work as a strainer and a vortex breaker or suction diffuser all in the one body.





## RYDLYME – BIODEGRADABLE DESCALER

RYDLYME is a great way to remove scale from all types of equipment, from heat exchangers to boilers to windscreens. It also comes in a marine grade mixture to further enhance its non-corrosive properties especially with aluminium.

- RYDLYME is an extremely innovative and unique solution fortified with wetting and penetrating agents to actually dissolve deposits into solution, like sugar in coffee. This revolutionary liquid is time tested and proven to be the safest and most cost effective solution for fouled equipment or systems. Thanks to our valued customers, RYDLYME is now the “World’s Leading Biodegradable Descaler”.
- RYDLYME is specifically designed to dissolve the toughest water scale, lime, mud or rust deposits from virtually any piece of water based equipment.
- Whilst RYDLYME is effective in dissolving these tough deposits it is a totally safe liquid being non-toxic, non-injurious, non-flammable, non-hazardous, non-corrosive and biodegradable.
- Cost effectiveness is provided through reduced downtime of plant by simply adding RYDLYME directly through the fouled water systems and avoiding the dismantling of equipment. RYDLYME can clean plant whilst still in operation and without the necessity of shutdown affording effective cost savings.
- Disposal of RYDLYME is not a problem as it has been tested and proven to be biodegradable and may be water flushed through normal sewer systems, into plant effluent or lake ponds.
- Approval has been given by the USDA and Food and Drug Administration for RYDLYME to be used in food, beverage, bottling, pharmaceutical, poultry and other food processing plants.
- RYDLYME has surpassed many government specifications having been tested by EPA licensed testing facilities confirming its biodegradability. As a result, it has approval for use by many government and non-government agencies including the United States and Australian Navies, the Western Australian Water Corporation, Alcoa World Alumina Australia, Woodside Petroleum, Ingersoll-Rand and Nash Vacuum Pumps. Many of these companies specify exclusive use of RYDLYME in their service manuals.

## EBARA – BOILER FEED PUMPS

### EVMS Vertical Multistage Pumps – Shurricane Patented Impeller Technology

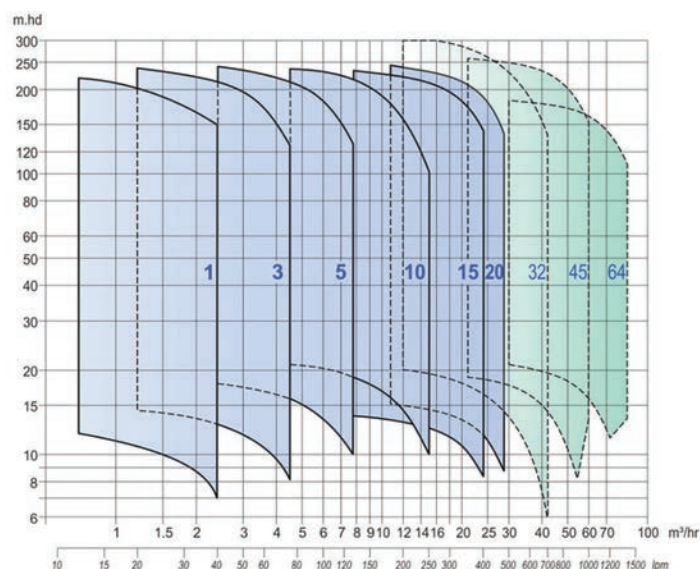
EBARA's new EVMS vertical multistage pumps are manufactured to the highest standards of quality, and achieve reliable operating performance by means of strict technical evaluation criteria and control programs that involve the whole manufacturing process.

Ebara has rethought the hydraulic design used in multistage pumps. Utilising the latest in computational fluid dynamics and design, followed by rigorous testing, Ebara has developed a unique impeller design that offers solutions and value to the customer.

The optimised shape of the Shurricane maintains high efficiencies and very significantly reduces the axial thrust – meaning that any standard IEC motor can be used and bearing life is improved.

- Boiler feed – irrigation systems – fire fighting
- Industrial, commercial and agricultural
- Pumping of hot or cold water for HVAC systems
- Water treatment (reverse osmosis, filtration)
- Various connections – oval, round or loose flange
- Cast iron, 304 or 316 stainless steel material options
- Various seal material options
- Model range: 1,3,5,10,15 and 20 m<sup>3</sup>/hr flow sizes
- Heads: up to 240 m
- Liquid temperature: -15 to +140°C
- Max. working pressure: 16 bar (oval flange)
- 25 bar (round flange)

Larger capacity EVM models available (32, 45 and 64 m<sup>3</sup>/hr).



### Any motor • Anywhere



## EBARA – INDUSTRIAL PUMPS

Ebara produce a vast range of pumps for industrial applications. For over 20 years Ebara has been in Australia with national stock and engineering support in Melbourne.



### Ebara – BEST Series Submersible Pumps

Manufactured in 304 stainless steel, with a double mechanical seal.

- Draining sumps, wells, cellars, lift shafts, etc
- Emptying pools and tanks
- Small scale irrigation



### Ebara – Cast Iron Surface Pumps

Suitable for the pumping of water and non aggressive liquids for a variety of uses.

- Domestic and agricultural pressure boosting
- Washing systems or plants
- Small scale irrigation
- Utilised in machinery for industrial use



### Ebara – Peripheral Turbine Pumps

Develop high pressures with the limited use of power.

- Hot or cold water pressure boosting
- Supplying small boilers
- Washing systems
- Pumping clean water in general



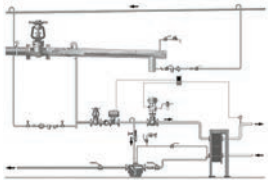
### Submersible Sewage Pumps

Robust construction with non-clog semi open impeller.

- Waste water
- Treated water
- Effluent
- Storm water
- Municipal or industrial drainage

# OSVFI – FABRICATION, INSTALLATION, MAINTENANCE, REPAIR AND OVERHAUL

We can supply project management, detailed engineering design and implementation services. Let us assist you to meet your targets.



## Steam and Condensate – Distribution and Return

Steam projects including pipe work and all valves and controls. Installed on a turnkey basis. Backed by knowledge gained in over 50 years of hands on experience. Talk to OSVFI today about how we can make your next project/upgrade a trouble free affair.

All installation work is fully backed up and guaranteed.



**ONE SOURCE**  
VALVES + FITTINGS + INDUSTRIAL

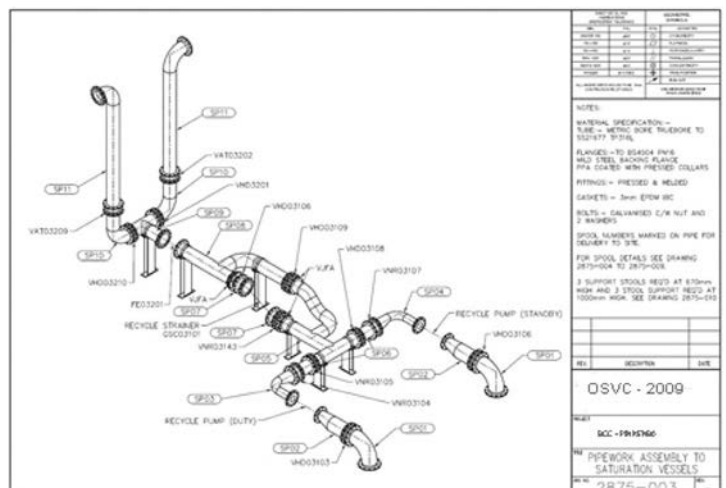
## Maintenance – Scheduled or Breakdown

Specialised knowledge is often hard to find and keep on site. Consider using OSVFI as a provider of a specialised repair service for valves, steam equipment and associated items. Speedy, reliable service is guaranteed. Remember our common sense policy applies in this area too.



## Tanks, Blow Down Vessels, Manifolds...

...boiler feed water, diesel day tanks, stands, spool pieces, pipe assemblies are all items that OSVFI can fabricate on a one-off basis or as OEM production models. Let us quote to your drawings or choose from our standard designs or have a once-off design to suit your specific requirement and application.



## OSVFI – ENERGY SERVICES

OSVFI can offer specialised services aimed at saving your business energy and improving overall outputs from your processes.



### Steam Trap Testing

At OSVFI we have over 30 years' experience in steam trap application, surveying and testing. We can supply detailed steam (energy) loss reports and costings.

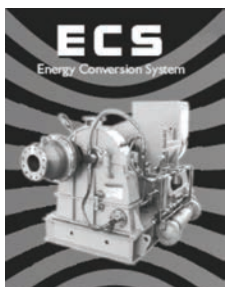
The report can be as detailed or brief as you desire. These reports pay for themselves in a matter of weeks. Ask for more information today and start saving money.



### Hot Water System – Energy Optimisation Design

Many plants use gas to make steam and hot water. This often leads to overall efficiencies in the order of 70% or even less in most cases.

Let OSVFI show you how to use gas to instantly make hot water at 99% efficiency. Save energy, save money and produce considerably less greenhouse gas.



### Energy Conservation System – 75 to 650 kW/hour

Small steam turbines produce electricity as a pressure reducing device from boiler pressure to point-of-use pressure. For example, 1000 kPa inlet 150 kPa outlet 13,000 kg hour can produce 500 kW/hour @ 6.3 cents per kW = \$157,500/year, and you still get to use the low pressure steam for your heating requirements. Give OSVFI a call today to discuss the opportunities to save.



### Steam Trap Energy Conservation Programs

All steam traps use some energy in operation. When you own 10 traps or more opportunities exist to select the most energy efficient trap for your situation.

Let us show you how to save many thousands of dollars per steam trap over the life of your plant. Stop wasting energy today and start saving money.

## OUR MISSION

OSVFI will strive to be recognised as a supplier of high quality products that deliver operational reliability and cost savings to our customers.

OSVFI will at all times act ethically and have concern for all parties involved in all transactions they conduct.

**OSVFI will be known as an  
“On Time – On Call – On Budget” supplier.**

## OUR GUARANTEE

OSVFI Guarantee to provide the following:

**System and product recommendations with a  
focus on providing a long-term solution**

After sales service and backup in the field

**Ongoing technical support**

Repair and parts services

**Energy saving recommendations**

Personalised service







# ONE SOURCE

VALVES + FITTINGS + INDUSTRIAL



**One Source Valves Pty Ltd** 1-2/27 Ada Street, Coopers Plains QLD 4108  
**Phone** 07 3274 5858 **Email** [osvalve@osvalve.com.au](mailto:osvalve@osvalve.com.au)

**Tullamarine Valve & Fitting** 7/39 Barrie Road, Tullamarine VIC 3043  
**Phone** 03 9330 4545 **Email** [info@tullavalves.com.au](mailto:info@tullavalves.com.au)

**ACN** 11 137 546 304

[www.osvalve.com.au](http://www.osvalve.com.au)